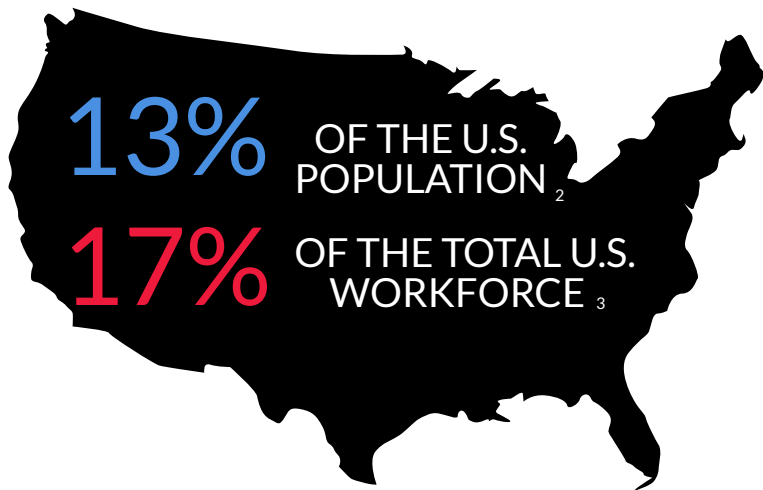


IMMIGRANTS ARE INDISPENSABLE TO THE WORKFORCE:

RETAIL SECTOR

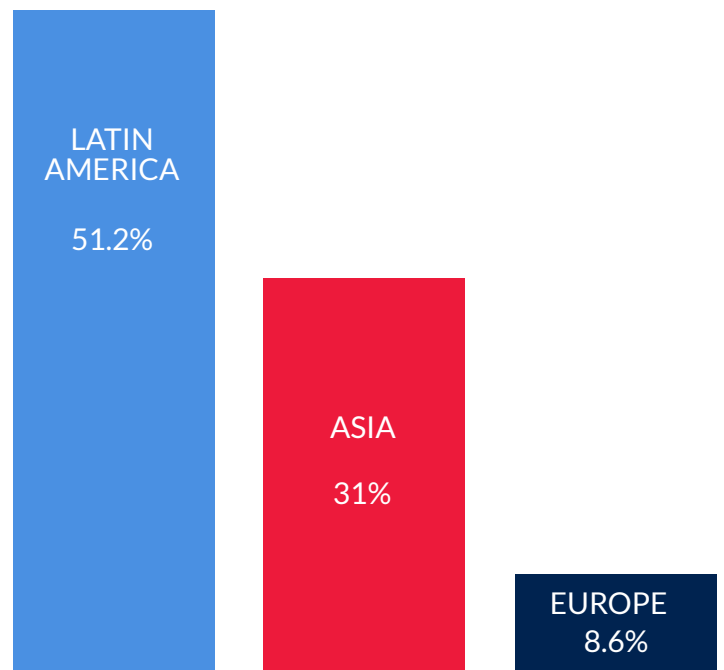
THE RETAIL TRADE SECTOR IS VULNERABLE TO CHANGES IN US IMMIGRATION BOTH IN TERMS OF AN ADEQUATE LABOR FORCE AND INCREASED CUSTOMERS ¹

IMMIGRANTS ACCOUNT FOR:



14.3% OF THE ENTIRE U.S. RETAIL TRADE SECTOR ⁴

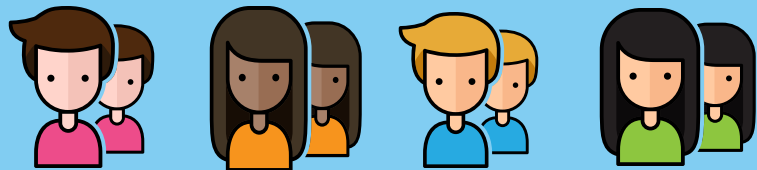
THERE IS A DIVERSITY OF IMMIGRANTS IN THE RETAIL TRADE SECTOR ⁵



RETAIL SALES IS THE **4th** LARGEST INDUSTRY EMPLOYING IMMIGRANTS ⁶



THE MEDIAN HOURLY WAGE OF RETAIL SALESPERSON IS **\$14.12** PER HOUR, OR **\$29,360** ANNUALLY ⁷



SOURCES

1. Pew Research Center, http://assets.pewresearch.org/wp-content/uploads/sites/7/2016/11/02160338/LaborForce2016_FINAL_11.2.16-1.pdf
2. U.S. Census Bureau, <https://www.census.gov/data/tables/2014/demo/foreign-born/cps-2014.html>
3. Bureau of Labor Statistics - U.S. Department of Labor, <https://www.bls.gov/news.release/pdf/forbrn.pdf>
4. U.S. Department of Labor and 2018 American Community Survey <https://research.newamericaneconomy.org/report/immigrant-workers-in-the-hardest-hit-industries>
5. U.S. Census Bureau, <https://www.census.gov/data/tables/2018/demo/foreign-born/cps-2018.html>
6. Pew Research Center, <https://www.pewresearch.org/fact-tank/2017/03/16/immigrants-dont-make-up-a-majority-of-workers-in-any-u-s-industry/>
7. Bureau of Labor Statistics, <https://www.bls.gov/oes/current/oes412031.htm>



NATIONAL
IMMIGRATION
FORUM